

-  info@isedio.com
-  +44 (0) 8448 797 037
-  www.isedio.com

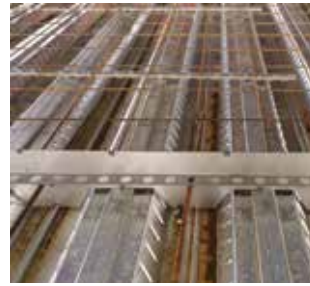
TECHNICAL DATA SHEET

STEELDECKJOINT® THE NEXT LEVEL OF FORMWORK

STEELDECKJOINT® is a revolutionary leave-in-place composite floor joint solution, which solves many of the deficiencies and time consuming elements of forming a construction joint on a steel deck floor using timber formwork.

Traditional methods involve fixing lengths of timber, end to end, on top of the steel decking and mesh reinforcement. Mesh reinforcement is positioned to a specific height above the steel decking to provide structural integrity when embedded in the concrete slab. When timber is used as a joint detail, the mesh reinforcement often becomes pressed close to the top of the steel decking leading to loss of embedment in the concrete and loss of structural integrity. Large gaps between the underside of the timber and the steel decking troughs allow concrete to uncontrollably spill through, causing additional time to be spent on cleaning up. Voids within the concrete matrix are created near the joint, in congested areas between the mesh and the steel decking where there is insufficient space for concrete to flow. This again leads to a loss of structural integrity. The concrete slab thickness is a critical feature of the slab design. Timber formwork is awkward to height adjust and packing may be necessary. This requires repeated checks and adjustment resulting in an inconsistent slab thickness.

STEELDECKJOINT® eliminates these problems and produces a superior construction detail.



STEELDECKJOINT® FORMWORK



STEELDECKJOINT® FORMWORK



TIMBER FORMWORK



TIMBER FORMWORK

Fixing of **STEELDECKJOINT®** could not be simpler. Using the same self-cutting fasteners used to fit steel decking, lengths of interlocking **STEELDECKJOINT®** can be quickly, easily and accurately set up using just a string-line and no special tools. Height adjustment is straightforward and speedy via the top adjustable plate. A consistent slab thickness can be guaranteed. In addition to a quick installation time, there is no time wasted stripping out **STEELDECKJOINT®**, unlike timber, as it is leave-in-place. Voids are eliminated in the concrete matrix as mesh reinforcement remains at the correct height above the steel decking and round dowel bars are used to span the joint providing continuity of load transfer.

STEELDECKJOINT® provides flooring contractors with a more professional, more economical and structurally engineered way of finishing a days pour.