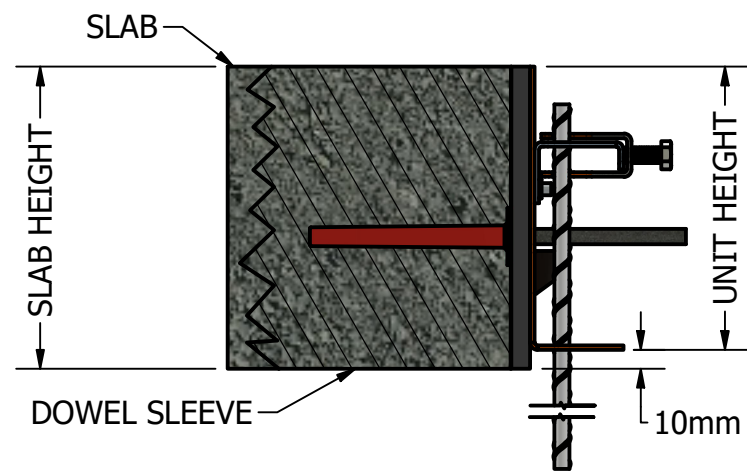
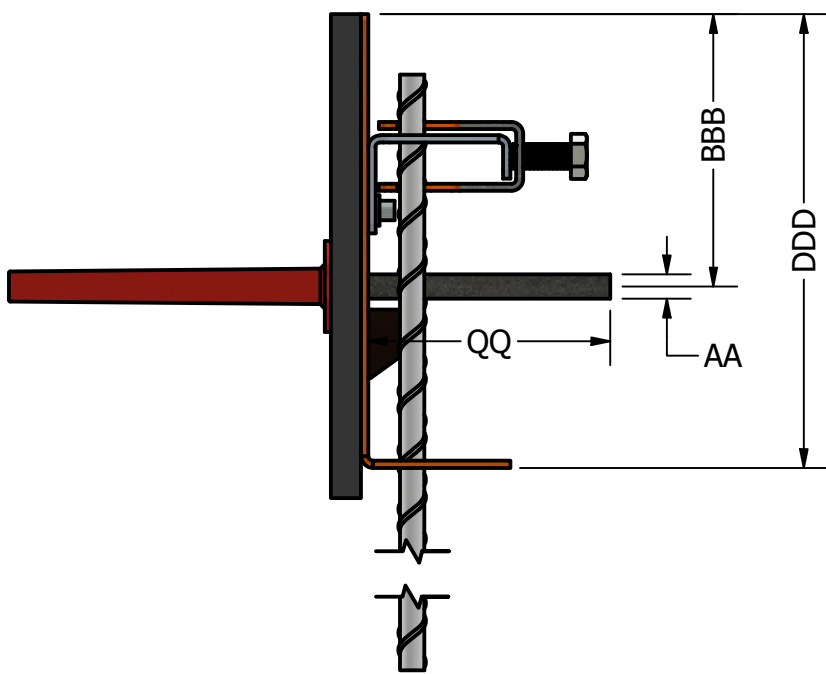
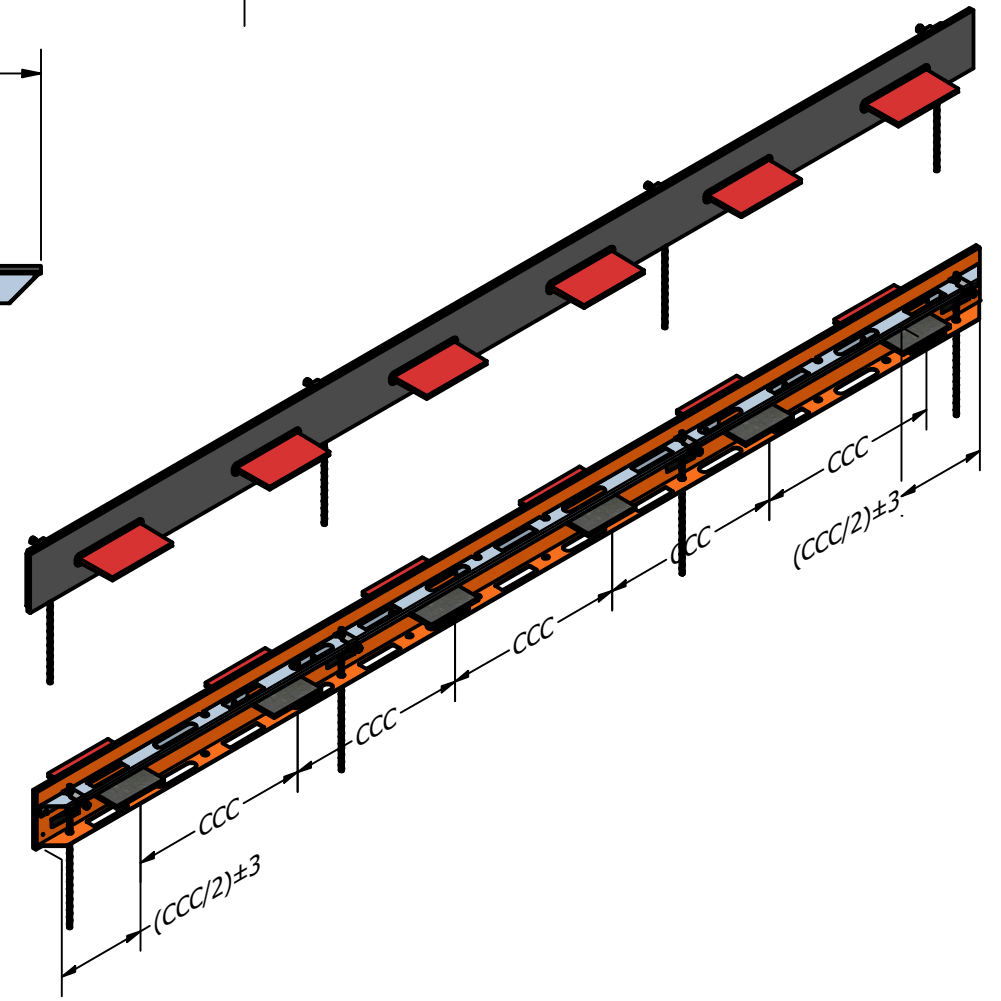
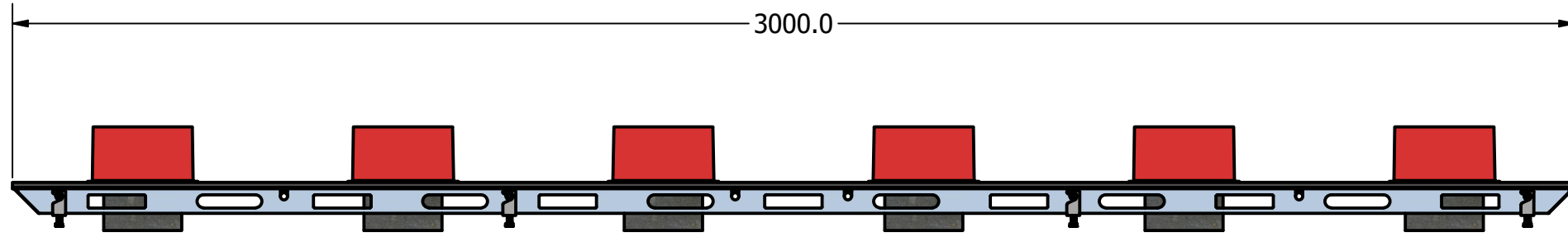


NOTES



- Note:**
1. RECOMMENDED SIZES ARE INCLUDED IN THE TABLE BELOW TO ASSIST IN YOUR SELECTION.
  2. LEVIAT WELCOMES YOUR CUSTOM DESIGN. PLEASE FOLLOW THE ITEM CODE DESCRIPTION TO BUILD YOUR CUSTOM ARMOUR JOINT.
  3. DOWEL SHOULD BE LOCATED AT THE CENTER OF THE SLAB HEIGHT +/- 20mm
  4. CONTACT LEVIAT'S SALES OR TECHNICAL TEAM FOR ASSISTANCE WITH YOUR DESIGN.

Recommended Sizes							Pegs and Wedges	
EJ	X	3000	AA	BBB	CCC	DDD	SLAB	
EJ	X	3000	08	70	500	130	140	PW1504 (4 off 8x390mm peg + 4 wedges) for slabs up to 200mm
EJ	X	3000	08	75	500	140	150	
EJ	X	3000	08	80	500	150	160	PW3004 (4 off 12x790mm peg + 4 wedges) for slabs above 200mm
EJ	X	3000	08	85	500	160	170	
EJ	X	3000	08	100	500	190	200	
EJ	X	3000	12	150	500	290	300	

ARMOUR JOINT    JOINT LENGTH    DOWEL CENTER    UNIT HEIGHT  
**EJ-X-3000-AA-BBB-CCC-DDD**  
 MATERIAL    DOWEL THICKNESS    DOWEL SPACING

MATERIAL =X = BLACK STEEL(B), GALVANIZED(G), STAINLESS STEEL(S)  
 DOWEL THICKNESS =AA = 8mm,12mm  
 DOWEL HEIGHT =BBB = CENTER OF SLAB ± 20mm ( MINIMUM 70mm)  
 DOWEL SPACING =CCC = 430mm, 500mm, 600mm  
 JOINT HEIGHT =DDD = 140mm~290mm (10mm INCREMENT)  
 DOWEL EXPOSED =QQ = 80mm ON 8mm OR 60mm ON 12mm  
 UNIT HEIGHT = SLAB HEIGHT - 10mm

BY	DATE	REVISION	LETTER
<b>Leviat</b> A CRH COMPANY		Leviat 98 Kurrajong Avenue, Mount Druitt, Sydney, NSW 2770 Australia 1300 304 320 , +61 (0) 2 8808 3100 info.isedio.au@leviat.com isedio.com.au   Leviat.com	
<b>ISEDIO</b> <sup>®</sup>			
© Leviat a CRH Company owns the copyright/design right in this drawing and in respect thereof all rights are hereby reserved.			
IF IN DOUBT ASK		DO NOT SCALE	
DRAWING TYPE: -			
CUSTOMER COPY			
PRODUCT ITEM NUMBER: -			
EXPANSION JOINT			
DRAWN	CHECKED	APPROVED	DATE
N.B	B.K	M.H	23/09/24
MATERIAL	SCALE	DRAWING No.	REV.
	N.T.S	I-M-EJ-0001	01